



## SWIVEL JOINTS & QUICK CONNECT COUPLINGS

*For High Pressure Applications*



**Commitment to deliver accuracy**

**Establishing integrity through  
excellence**

**Enhancing efficiency benchmarks**

**Broadening horizons by sustaining  
brilliance**



*...Make the leak free connections with  
Sealexcel products at economical price...*



SEALEXCEL® Swivels joints have been carefully designed and manufactured with continuous research and development backing to very close tolerances under rigid quality control procedures approved to ISO 9001:2000 quality management systems to meet the requirements of high pressure hydraulic applications, the swivel joints are generally used in various machines/Industries such as,

- Injection Molding
- Mobile Equipment
- Palletizers etc.
- Pulp and Paper
- Hose Reels
- Logging
- Pressure Washers
- Refuse Trucks
- Machine Tools
- Utility Equipment
- Steel Mills

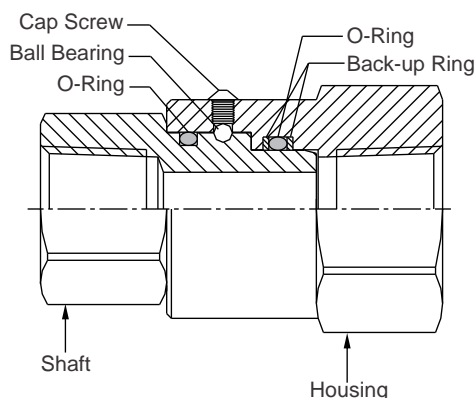
### FEATURES

- Hardened bearing races for extended service life
- Full Flow design minimizes pressure drop for optimum system performance.
- Sealed bearing design isolated bearing race from media and environment.
- Reduced bearing load design minimizes wear in the bearing race and extends services life.
- PTFE back-up rings support primary seal for high-pressure applications.
- Variety of seal option available.
- Available in Steel and Stainless Steel SS 316 Material.

### BENEFITS

- Show no significant increase in torque with introduction of pressure
- Fit in compact areas.
- Prevent environmental contaminants from entering the swivel joints.
- Allow quick and reliable field repair.

### CONSTRUCTION OF SWIVEL JOINTS



## MATERIAL OF CONSTRUCTION :

### Metal Parts

- Carbon steel with Zinc plating : It is recommended for non-corrosive applications i.e., hydraulic, pneumatic etc.
- Stainless Steel : It is recommended for applications i.e. water, chemicals, solvents etc.

### Sealing Parts

Viton® (Fluorocarbon) – For petroleum based applications.

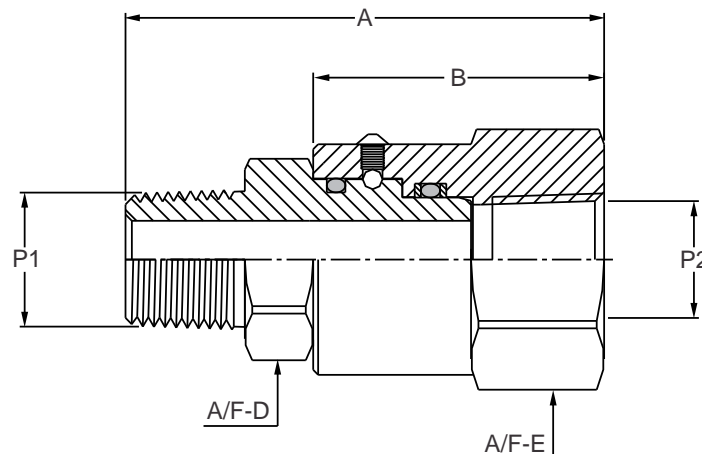
Aflas® (TetraFluoroethylene-Propylene Copolymer) form any individual chemicals.

PTFE (Teflon®) : used as a back-up ring.

Other seals such as Nitrile, Silicon, EPDM are available on request.

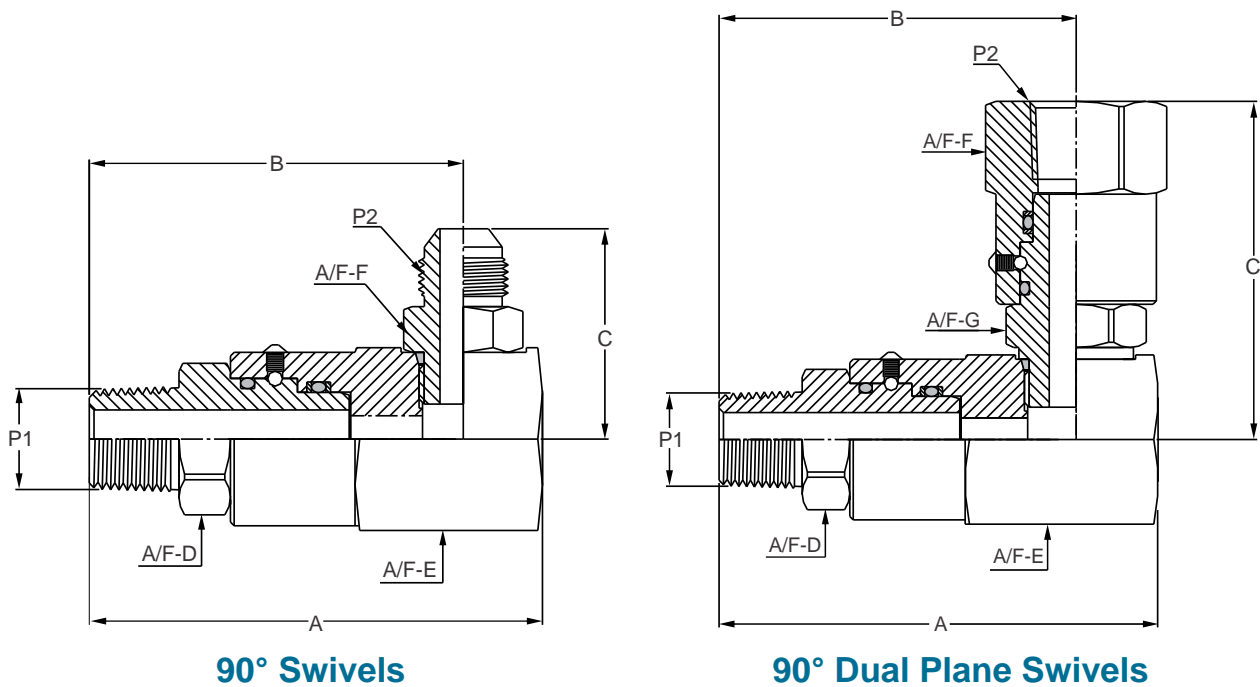
## OPERATING PARAMETER

TYPES	DESCRIPTION
Available Size	1/4" to 1"
Pressure Rating	Up to 5000 PSI.
Temperature Rating	Up to 180°C (Depending on sealing material)
End Connections	<ul style="list-style-type: none"> <li>● Female BSPP x Female BSPP ● Male BSPP x Female BSPP</li> <li>● Female NPT x Female NPT ● Male NPT x Female NPT</li> <li>● Male JIC 37° x Female NPT ● Male JIC 37° x Female JIC 37°</li> <li>● SAE 'O' Ring Straight x Female NPT ● Male JIC 37° Bulkhead x Female JIC 37°</li> <li>● Male JIC 37° Bulkhead x Male JIC 37° ● Male SAE 'O' Ring straight thread x Male JIC 37°</li> <li>● Male NPT x Male JIC 37° ● Male JIC 37° x Male JIC 37°</li> <li>● Male SAE 'O' Ring straight thread x Female JIC 37°</li> </ul>



Male pipe to Female pipe - (Inline Swivels)

CONNECTION SIZE		DIMENSIONS IN inch / mm				SEALEXCEL Part No.
P1	P2	A	B	A/F-D	A/F-E	
1/4-18 NPT	1/4-18 NPTF	2.59" 65.8mm	1.60" 40.6mm	0.75" 19.0mm	1.19" 30.2mm	SJO7-4N
3/8-18 NPT	3/8-18 NPTF	2.66" 67.5mm	1.64" 41.7mm	0.88" 22.2mm	1.25" 31.8mm	SJO7-6N
1/2-14 NPT	1/2-14 NPTF	3.03" 76.8mm	1.79" 45.5mm	1.12" 28.6mm	1.50" 38.1mm	SJO7-8N
3/4-14 NPT	3/4-14 NPTF	3.10" 78.8mm	1.85" 47.0mm	1.38" 35.0mm	1.625" 41.2mm	SJO7-12N
1-11 ½ NPT	1-11 ½ NPTF	3.54" 89.8mm	2.11" 53.5mm	1.62" 41.3mm	1.81" 46.0mm	SJO7-16N



**90° Swivels**

**90° Dual Plane Swivels**

**Male pipe to Male 37° Flare (90° Swivels)**

CONNECTION SIZE		DIMENSIONS IN inch / mm						SEALEXCEL
P1	P2	A	B	C	A/F-D	A/F-E	A/F-F	Part No.
1/4-18 NPT	7/16x20 UNF	2.85" 72.3mm	2.44" 62.0mm	1.39" 35.2mm	0.75" 19.0mm	1.19" 30.2mm	0.56" 14.3mm	SJL21-4N-7AN
3/8-18 NPT	9/16x18 UNF	3.05" 77.4mm	2.54" 64.4mm	1.44" 36.6mm	0.88" 22.2mm	1.25" 31.8mm	0.69" 17.5mm	SJL21-6N-9AN
1/2-14 NPT	3/4x16 UNF	3.43" 87.0mm	2.84" 72.0mm	1.78" 45.1mm	1.12" 28.6mm	1.50" 38.1mm	0.88" 22.2mm	SJL21-8N-12AN
3/4-14 NPT	1-1/16x12 UNF	3.66" 93.0mm	3.00" 76.1mm	2.24" 56.9mm	1.38" 35.0mm	1.625" 41.2mm	1.25" 31.8mm	SJL21-12N-17AN
1-11 1/2 NPT	1-5/16x12 UNF	4.41" 112.0mm	3.54" 90.0mm	2.42" 61.3mm	1.62" 41.3mm	1.81" 46.0mm	1.50" 38.1mm	SJL21-16N-21AN

**Male NPT to Female NPT (90° Dual Plane Swivels)**

CONNECTION SIZE		DIMENSIONS IN inch / mm							SEALEXCEL
P1	P2	A	B	C	A/F-D	A/F-E	A/F-F	A/F-G	Part No.
1/4-18 NPT	1/4-18 NPTF	2.85" 72.3mm	2.44" 62.0mm	2.625" 66.7mm	0.75" 19.0mm	1.19" 30.2mm	1.19" 30.2mm	0.75" 19.0mm	DSJL07-4N
3/8-18 NPT	3/8-18 NPTF	3.05" 77.4mm	2.54" 64.4mm	2.74" 69.6mm	0.88" 22.2mm	1.25" 31.8mm	1.25" 31.8mm	0.88" 22.2mm	DSJL07-6N
1/2-14 NPT	1/2-14 NPTF	3.43" 87.0mm	2.84" 72.0mm	3.14" 79.8mm	1.12" 28.6mm	1.50" 38.1mm	1.50" 38.1mm	1.12" 28.6mm	DSJL07-8N
3/4-14 NPT	3/4-14 NPTF	3.66" 93.0mm	3.00" 76.1mm	3.44" 87.4mm	1.38" 35.0mm	1.625" 41.2mm	1.625" 41.2mm	1.38" 35.0mm	DSJL07-12N
1-11 1/2 NPT	1-11 1/2 NPTF	4.41" 112.0mm	3.54" 90.0mm	3.83" 97.3mm	1.62" 41.3mm	1.81" 46.0mm	1.81" 46.0mm	1.62" 41.3mm	DSJL07-16N





SEALEXCEL® Series 110 Double Shut-off Quick Connect Couplings are designed and manufactured for hydraulic applications suitable for Production Machineries, Construction Machineries and Equipments, Earth Moving Equipments and Rugged Mobile etc. This couplings are used in the fluid transfer lines to be connected and disconnected for maintenance or operation of the equipments. SEALEXCEL® series 110 Quick Connect Couplings are of the Industries interchange and interchangeable with ISO 7241-1, series 'A' Couplings.

**MATERIAL OF CONSTRUCTION**

- Carbon Steel with Zinc Plating
- Nitrile 'O' ring are fitted as standard seals
- Viton® 'O' ring are available on request

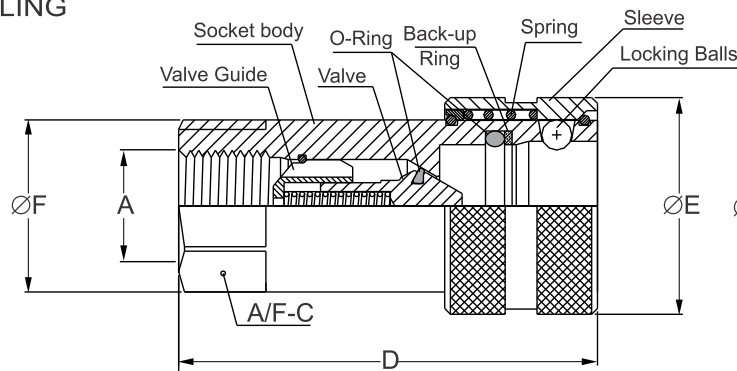
**FEATURES**

- Robust in Construction.
- Easy for manual connection and disconnection without tools.
- Ball Locking mechanism provides safe and reliable connections.
- Captive valve seal ensures leak free sealing, minimize the seal washout or damage from high velocity Fluid acceleration.
- Seal with PTFE back-up rings designed to ensure reliable and leak free sealing even in high pressure applications.

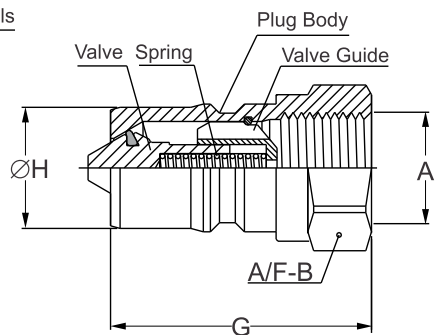
**PRODUCT RANGE AND OPERATING PARAMETERS**

- Available Size : 1/8" to 1"
- Pressure Rating : Up to 5000 PSI
- Temperature Rating : Up to 110°C
- End Connections : Available with NPT, BSPP, BSPT etc. pipe threads.

COUPLING



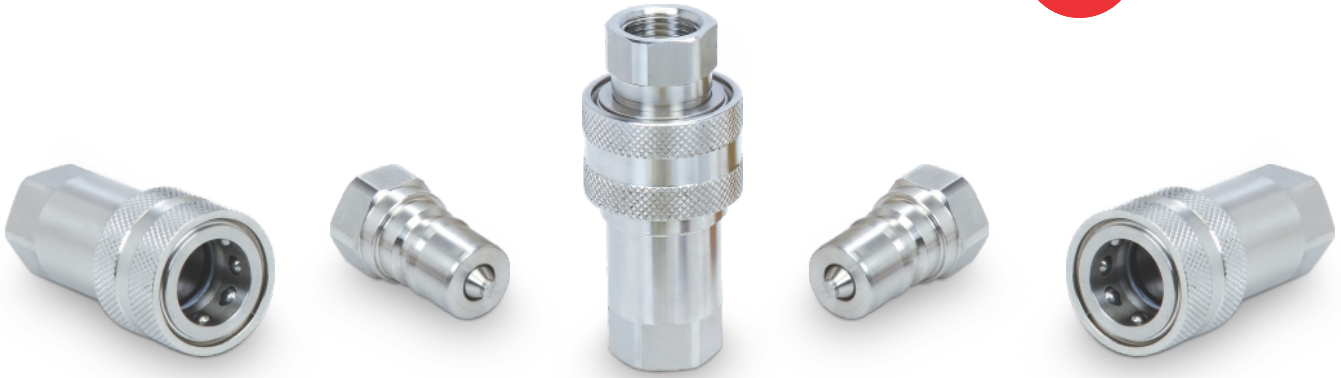
PLUG



Female BSP Coupling Series -110

SIZE	DIMENSION IN mm/inch							SEALEXCEL Part No.
	A/F-B	A/F-C	D	E	F	G	H	
1/4" BSP	19 0.75	19 0.75	47.1 1.85	26 1.02	22 0.87	32 1.26	11.8 0.46	QC-110-4G
3/8" BSP	22 0.87	22 0.87	56.1 2.21	31 1.22	24 0.94	38 1.50	17.3 0.68	QC-110-6G
1/2" BSP	27 1.06	27 1.06	63.3 2.49	38 1.50	30 1.18	44.5 1.75	20.5 0.81	QC-110-8G
3/4" BSP	36 1.42	38 1.50	82.2 3.24	48 1.89	44 1.73	55 2.17	29.1 1.15	QC-110-12G
1" BSP	41 1.61	45 1.77	97.1 3.82	54 2.13	52 2.05	63.1 2.48	34.3 1.35	QC-110-16G

# QUICK CONNECT COUPLINGS - Series 210



SEALEXCEL® Series 210 Double Shut-off Quick Connect Couplings are designed and manufactured for variety of Hydraulic Applications. The main application of this Quick Connect Couplings are on the Fluid Transfer Lines for connection and disconnection during maintenance of the equipment without disrupting the operation and loss of fluids. To suit variety of heavy industrial applications which would typically include.

- Chemicals and Pharmaceuticals
- Machine Tool/Automation
- Off Shore
- Oil Refineries
- Ship Building
- Steel Mills

SEALEXCEL® Series 210 Quick Connect Couplings are of the industries interchange design and interchangeable with ISO 7241-1 Series 'B' couplings.

## MATERIAL OF CONSTRUCTION

Available in Stainless Steel 316 ● Viton® 'O' Ring are fitted as standard seals

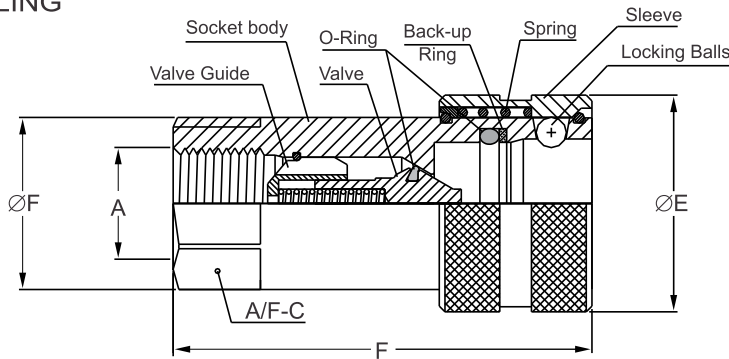
## FEATURES

- Robust in Construction.
- High Flow Capacity.
- Positive Valve stop.
- Captive valve seal ensures leak free sealing, minimize the seal washout or damage from high velocity Fluid acceleration.
- Seal with PTFE back-up rings designed to ensure reliable and leak free sealing even in high pressure application.
- Ball Locking mechanism Provides safe and reliable connections.

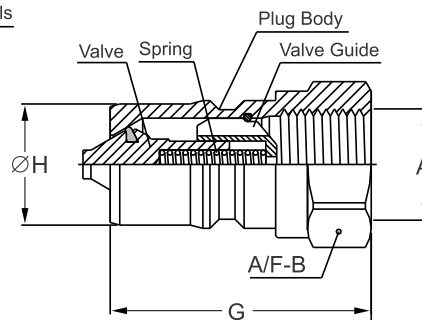
## PRODUCT RANGE AND OPERATING PARAMETERS

- Available Size : 1/8" to 1"
- Pressure Rating : Up to 3500 PSI
- Temperature Rating : Up to 200°C
- End Connections : Available with NPT, BSPP, BSPT, Metric etc. pipe threads.

COUPLING



PLUG



## Female BSP Coupling Series -210

SIZE	DIMENSION IN mm/inch							SEALEXCEL Part No.
	A/F-B	A/F-C	D	E	F	G	H	
1/8" BSP	14 0.55	14 0.55	48.8 1.92	23 0.91	15.8 0.62	30 1.18	10.8 0.43	QC-210-2G
1/4" BSP	19 0.75	19 0.75	57 2.24	27 1.06	21.2 0.83	35 1.38	14.2 0.56	QC-210-4G
3/8" BSP	24 0.94	24 0.94	66 2.60	34 1.34	27 1.06	41 1.61	19.1 0.75	QC-210-6G
1/2" BSP	27 1.06	27 1.06	73.9 2.91	42 1.65	29 1.14	46 1.81	23.5 0.93	QC-210-8G
3/4" BSP	36 1.42	36 1.42	90.1 3.55	50 1.97	38.5 1.52	55 2.17	31.4 1.24	QC-210-12G
1" BSP	41 1.61	41 1.61	106.2 4.18	60 2.36	44.8 1.76	66 2.60	37.7 1.48	QC-210-16G

# SEALEXCEL<sup>®</sup> Other Product Range



**Well-Lok  
Twin Ferrule Tube Fittings**



**Quick Connect Couplings  
Series 310**



**Fine-Lok  
Single Ferrule Tube Fittings**



**Stainless Steel  
Push-In-Fittings**



**Bite-Lok  
Tube Fittings as per DIN 2353**



**Flow Control Regulators**



**37° Flare Tube Fittings**



**Check Valves**



**Precision Pipe Fittings  
and Adaptors**



**Quick Exhaust Valves**



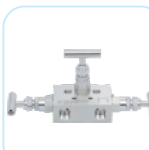
**Forged Body Needle Valves**



**Bar Stock Body Gauge/  
Root Valves**



**Bar Stock Body Needle Valves**



**Manifold Valves**

Viton<sup>®</sup> is a registered trade mark of Dupont company  
 Atlas<sup>®</sup> is a registered trade mark of Aashi Glass Co. Ltd.  
 Teflon<sup>®</sup> is a registered trade mark of Dupont Company



## SEALEXCEL<sup>®</sup> (INDIA) PVT. LTD.

### **Regd. Office & Unit-I :**

56 & 61, Veena Dalvai Industrial Estate,  
S. V. Road, Oshiwara, Jogeshwari (W),  
mumbai - 400 102. India.  
Ph. (+91-22) 2678 6885, 2678 8534, 66944124  
Fax (+91-22) 2678 1426, 66944126  
Email : sales@sealexcel.com  
Website : www.sealexcel.com

### **Unit-II :**

Plot No. 300/1&2, at Post - Mahi, Via Chhapi,  
Pirojpura - Mahi Road, Taluka - Vadgam,  
Dist - Banaskantha, North - Gujarat  
Pin - 385210. India

Catalogue No. SC-0409